



# GAT MONTHLY MEMBERSHIP PROGRESS REPORT

Results as of: 6/30/2024

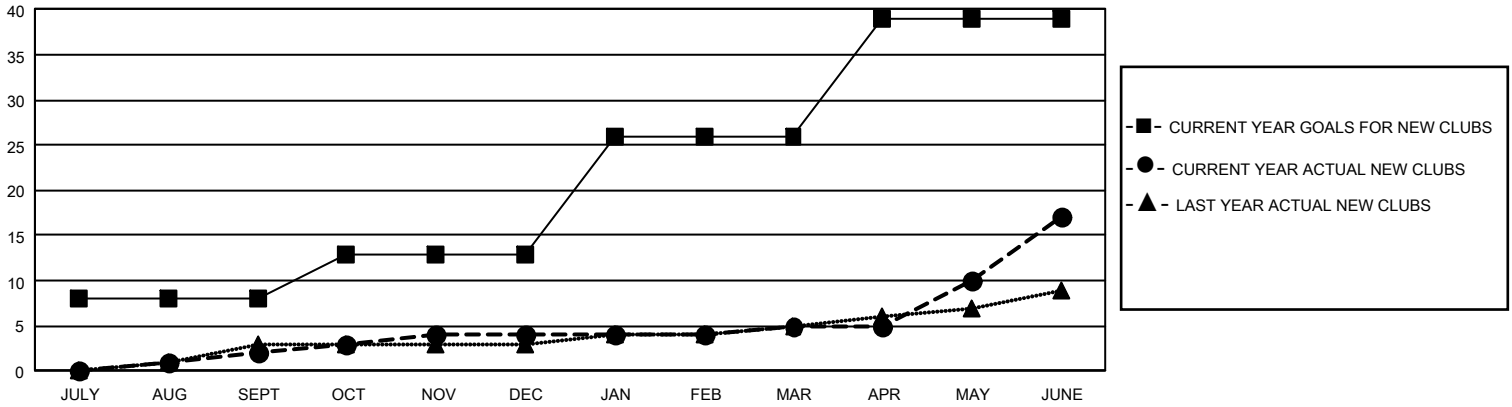
## GMT Constitutional Area 1, Group B

REPORT DOES NOT INCLUDE CLUBS IN UNDISTRICTED AREAS.

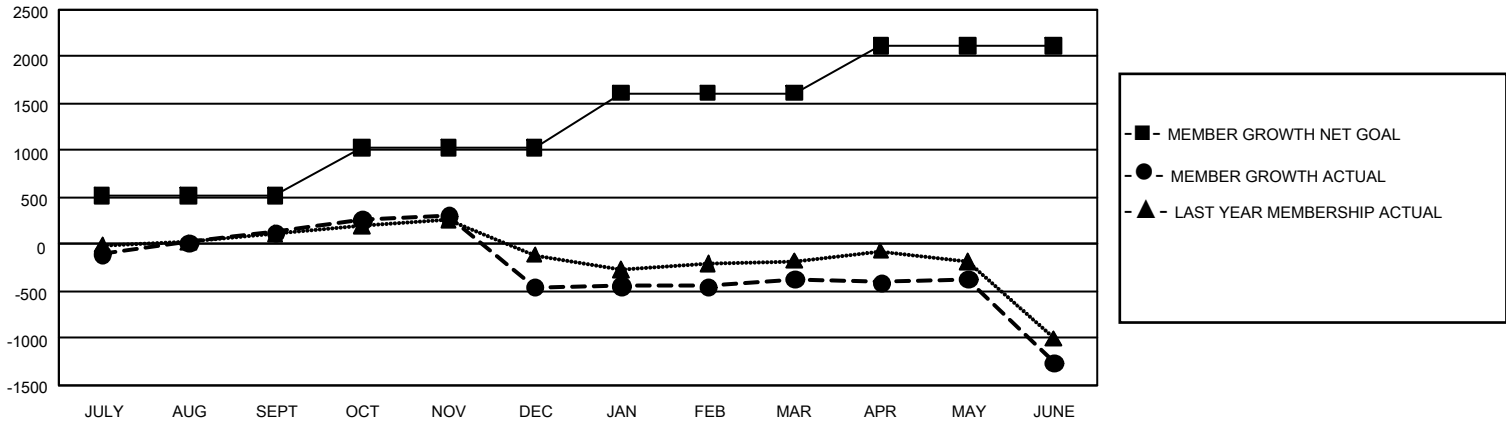
Clubs			
RESULTS FOR 2023-2024			
QUARTER	NEW CLUB GOAL	NEW CLUBS	DROPPED CLUBS
JULY/AUG/SEPT	24	2	5
OCT/NOV/DEC	15	2	26
JAN/FEB/MAR	39	1	8
APR/MAY/JUNE	39	12	22

Members			
RESULTS FOR 2023-2024			
QUARTER	MEMBER GROWTH NET GOAL	MEMBER GROWTH ACTUAL	DROPPED MEMBERS ACTUAL (including transfers)
JULY/AUG/SEPT	518	1,246	971
OCT/NOV/DEC	511	849	1,347
JAN/FEB/MAR	582	986	761
APR/MAY/JUNE	501	1,154	1,899

GOALS AND ACTUAL NEW CLUBS CUMULATIVE



GOALS AND ACTUAL MEMBERS CUMULATIVE



<b>DROPPED CLUBS: 61</b>	659 CLUBS OF 1,030 ADDED 1 OR MORE NEW MEMBERS	<b>GENDER DISTRIBUTION</b>	
		MALE 15,178 (57.88%) FEMALE 11,020 (42.03%) NON BINARY 3 (0.01%) PREFER NOT TO ANSWER 20 (0.08%)	
<b>DROPPED MEMBERS</b>		<b>TOTAL FAMILY UNIT MEMBERS</b> 5,327	
DECEASED 430 CLUB CANCELLED 429 OTHER 4,111 <b>TOTAL 4,970</b>	<a href="#">CLICK HERE FOR CUMULATIVE MEMBERSHIP DATA</a>	<b>FAMILY MEMBERS PAYING HALF DUES</b> 2,811	